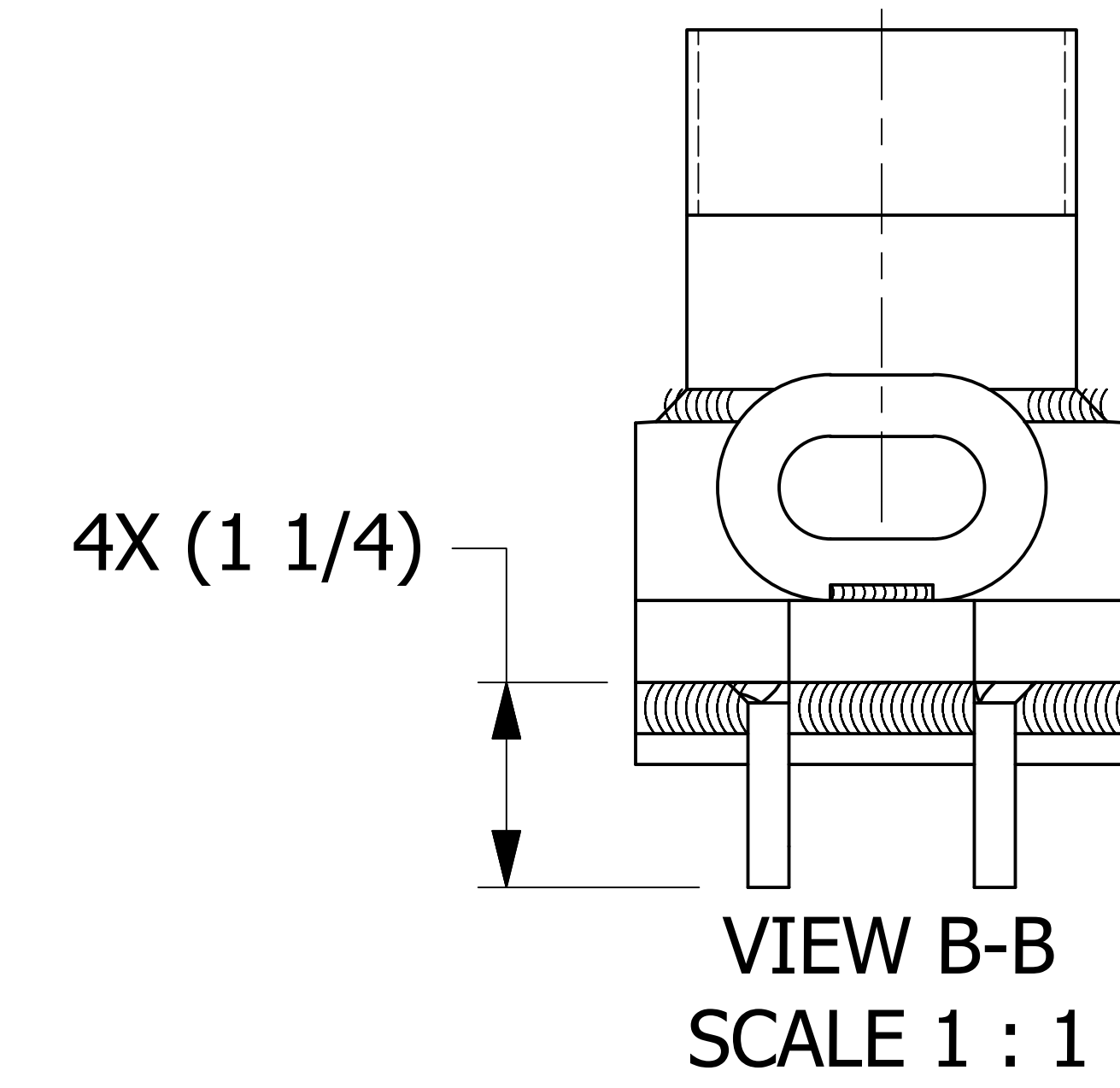
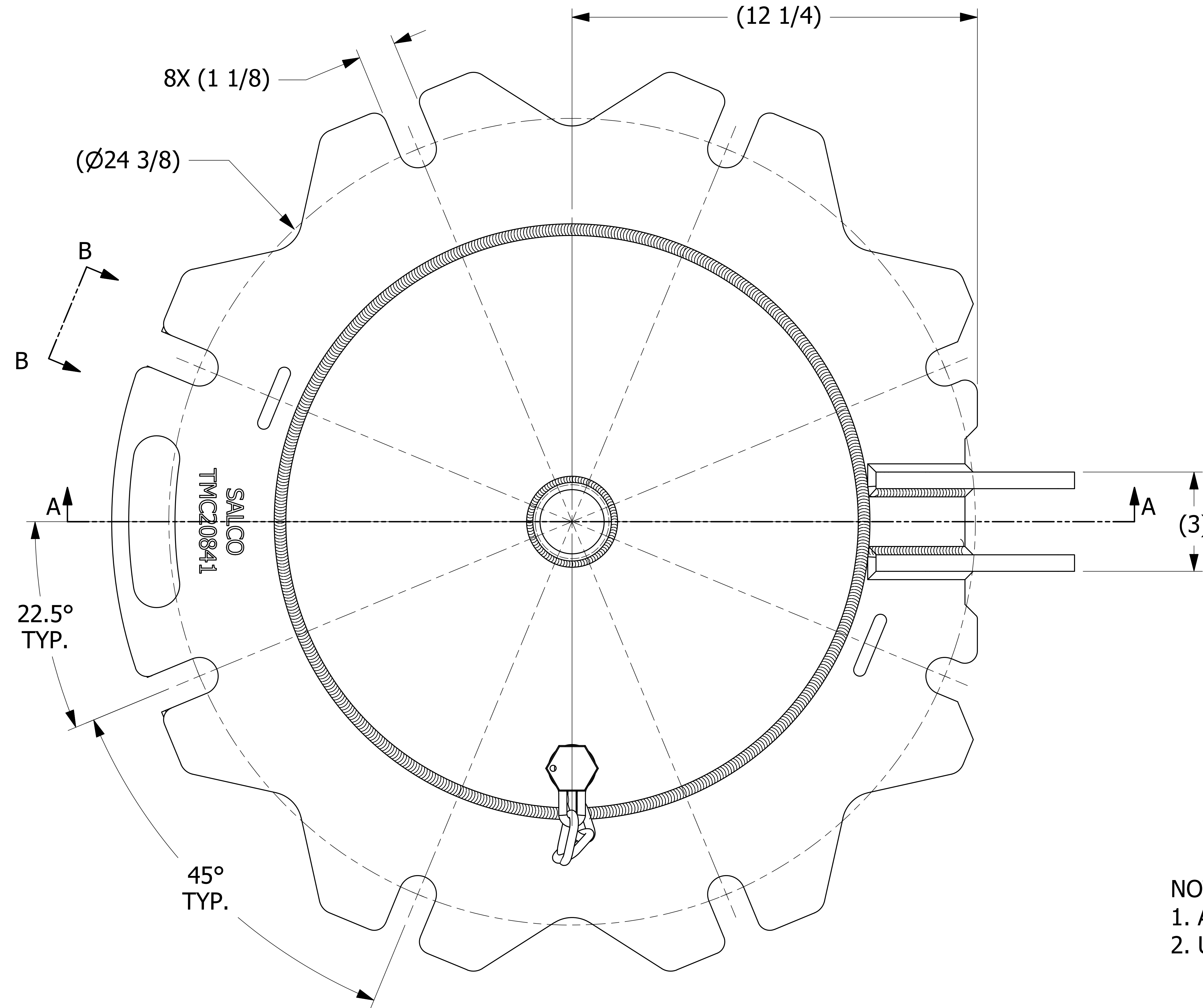
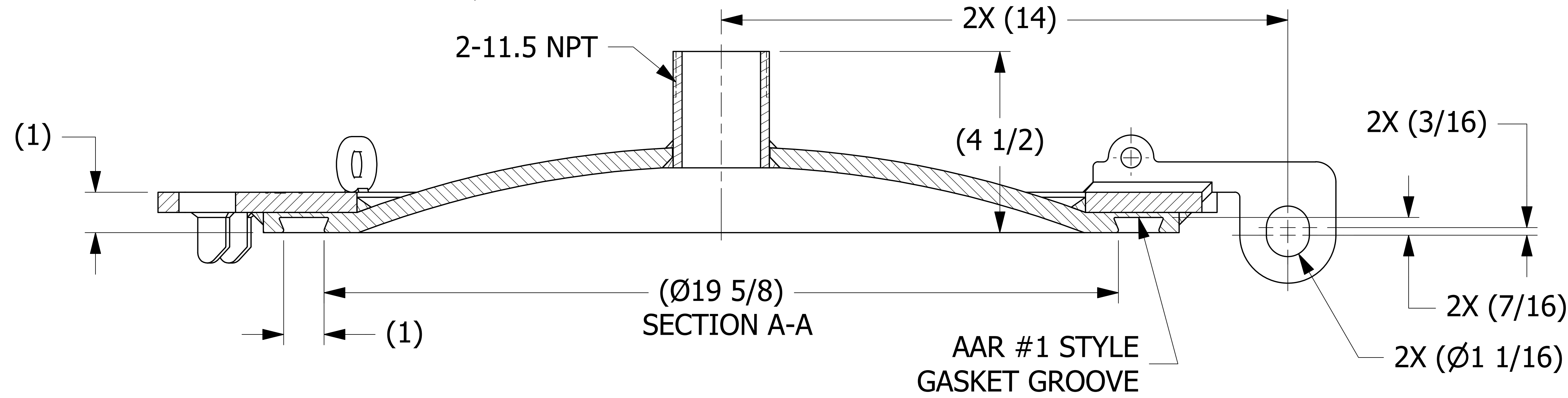


SALES DRAWING SALES DRAWING SALES DRAWING SALES DRAWING

SALES DRAWING SALES DRAWING SALES DRAWING SALES DRAWING



- NOTES:
1. AAR APPROVAL # E-182113.
  2. UNDERSIDE OF DOME HAS A DAIRY FINISH.



REV	BY	DATE	DESCRIPTION
F	WEB	2-8-19	Q-2.15.13 WAS QAP4B-1; AAR # WAS E-089004
E	RJP	11-21-17	ADDED "SALCO" TO TMC20841SF ENGRAVING; ADDED 2X (3/16); UPDATED NOTE 3
D	WEB	5-24-17	UPDATED NOTE 3
C	JG	4-3-17	UPDATED TMC20841SF HINGE, CENTERED NIPPLE, REMOVED QAP4C-1 NOTE
B	JJK	4-29-13	UPDATED TMC20841SF
A	KHK	1-29-13	RELEASED FOR PRODUCTION

UNLESS OTHERWISE SPECIFIED DIMENSIONAL TOLERANCES FRACTIONAL: ±1/16 X.XX: ±.03 X.XXX: ±.015 ANGULAR: ±1° DEBURR ALL SHARP EDGES. ALL MACHINED SURFACES TO HAVE A 125 RMS FINISH UNLESS NOTED OTHERWISE. THIRD ANGLE PROJECTION	DRAWN BY:	KHK
	CHECKED BY:	CHL
	PROTOTYPE BY:	KHK
	PROTOTYPE DATE:	1/14/2013
	APPROVED FOR PRODUCTION BY:	WRB
	PRODUCTION DATE:	1/29/2013

<b>SALCO PRODUCTS, INC.</b>			
PART NAME: <b>MANWAY COVER 20" 8-BOLT</b>			
MATERIAL: <b>CS/316L SS</b>			
PROJECT #:	130111	SHEET #:	1 OF 1
DRAWING #:	E35105	PART #:	TMC20841
SCALE:	2:3		